



# Company Introduction

Signature Towers, West Wing Floor 13, 100, Cheonggyecheon-ro, Jung-gu, Seoul, 04542, Republic of Korea | +82-2-316-9600 | [www.stx.co.kr](http://www.stx.co.kr)

**stx**Corporation

# Content

<b>CEO Message</b>	_____	3
<b>Who we are</b>		
• Profile	_____	5
• Overview	_____	6
• Identity	_____	7
• Core Value	_____	8
• Network	_____	9
<b>What we do</b>		
• TrollyGo	_____	11
• Secondary battery materials	_____	12
• Green Steel	_____	13
• Green energy / Bio	_____	14
• eMobility	_____	15
• New growth engines	_____	16
<b>Affiliates</b>		
• STX Green Logis	_____	18
• STX Marine Service	_____	19
• PK valve & Engineering	_____	21
• STX Resort	_____	22
• STX Aero Service	_____	23
• STX Network Service	_____	24
<b>Contact</b>	_____	25





# CEO Message

Since STX corporation established as a business holding company in 2001, we went through the significant path of general trading corporation specialized in raw material, energy, mechanical goods, and shipping logistics. Currently, STX corporation have advanced forward under the mission of achieving 'Global Business Platform' to satisfy both customers' demand and supply all over the world.

## Constant Challenge and Innovation for New Growth Projects Developments

STX Corporation will develop new growth business with constant challenge and innovation in a rapidly changing industrial environment. In order to achieve our goal, STX Corporation will use our accumulated sales know-how and solid global network to expand our overseas branches in Asia and South America and explore new prospective markets such as Africa. Especially, we will actively excavate new business opportunities which meet the global change of industrial environment and trend and promote to expand the quality of our operations and improve profitability by global business platform 'TrollyGo'.

## The Pursuit of Customer and Shareholder's Maximum Happiness

STX Corporation will always create new value and seek the happiness of our customers and shareholders. In addition, STX Corporation will keep practicing sustainable management through transparent and exemplary organizational management and mutual growth with stakeholders to maximize the value of our customers and shareholders and become a socially respected enterprise.

We ask your continuous interest and support for STX Corporation's lively steps to the global stage as a global business platform representing Republic of Korea.

Sang-Jun Park  
President & CEO





# Who we are

STX Corporation is a 'Global Business Platform' that connects customer's demand and supply throughout the global community in real time through long-standing international trade experiences, extensive overseas networks, and know-how in shipping and logistics operations.

- Profile
- Overview
- Identity
- Core Value
- Network

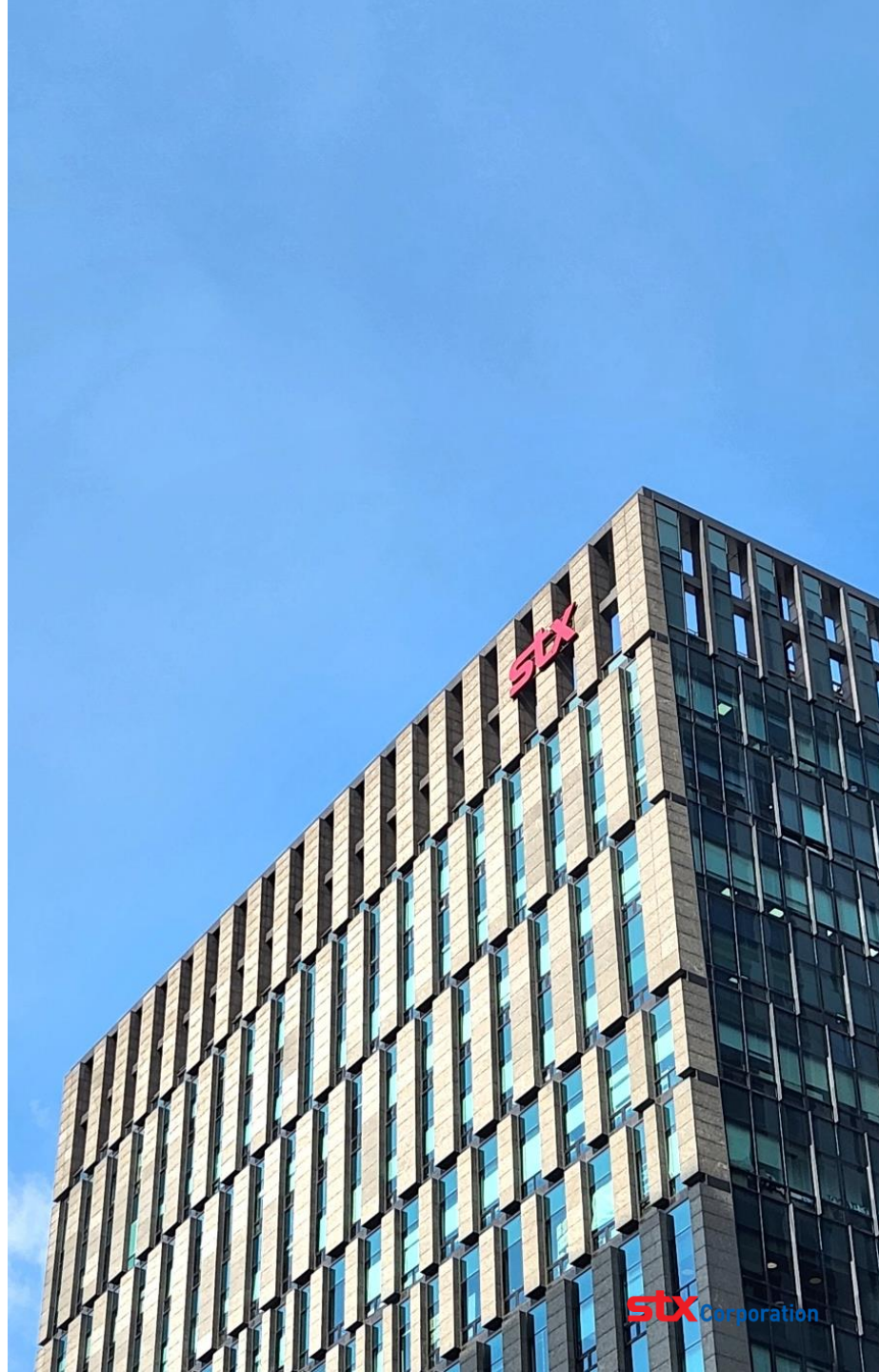
# Profile

## Company Information

Company name	STX Corporation
CEO	Sang-Jun Park
Founded date	December 24th, 1976
Listing Place	KOSPI(011810)
The Largest Shareholder	APC PE (46.05%)
Sales Amount	1,189billion won(as of 2022)

## History

1976	Ssangyong Heavy Machinery Co., Ltd. Founded
1990	KOSPI market listed
2001	Branched from Ssangyong Group, the company name changed to STX corporation
2006	Ambatovy Nickel mine share, in Madagascar, invested Korea Development Bank registered as the biggest shareholder (39.6%)
2014	APC Mercury Co., Ltd. Registered as the biggest shareholder (83.7%)
2018	
2020	41% PK Valve share acquired
2021	APC Mercury Co. Ltd. share increased to 55.4% after capital increase by issuing new stocks
2023	Equity spinoff determined on the maritime industry sector Establishing a corporate entity in Indonesia





# Overview

STX Corporation pushes development and investment projects together for new promising business, focusing on secondary battery materials, eco-friendly steel, green energy and bio, and e-mobility. We have completed spinoff of the maritime industry sector in September 2023, and to enhance STX expertise as a general trading company. STX Corporation also serves as a Headquarter, which operates 16 overseas branches, as well as a holding company with 4 affiliates and a joint ventures.



## Main Business

- International trade
- New Project Development and Investment Projects



## Supplementary Business

- New high-value added business such as Aviation MRO, and IT
- Traditional projects such as Resort, Ship and Plant management, Valve Manufacture



## Organizational Configuration

- 16 overseas branches
- 4 affiliate companies and joint ventures



## Current Status of Executives

- Approximately 80 executives and employees of the holding
- About 570 executives and employees at affiliates



# Identity

STX Corporation is a 'Global Business Platform' that is on the global with the three major projects:

'Innovating' new project development and investment business,

'Trading' International trade business using a wide overseas network, and

'Operating' global B2B digital platform 'TrollyGo'



# Core Value

STX considers 'sustainable' that pursue sustainability, professionalism that values 'trustful' between partners, 'flexible' responsiveness as the core value of corporate management, despite the rapid changes in the business, market, and people's 'trust' as a core value of enterprise management.

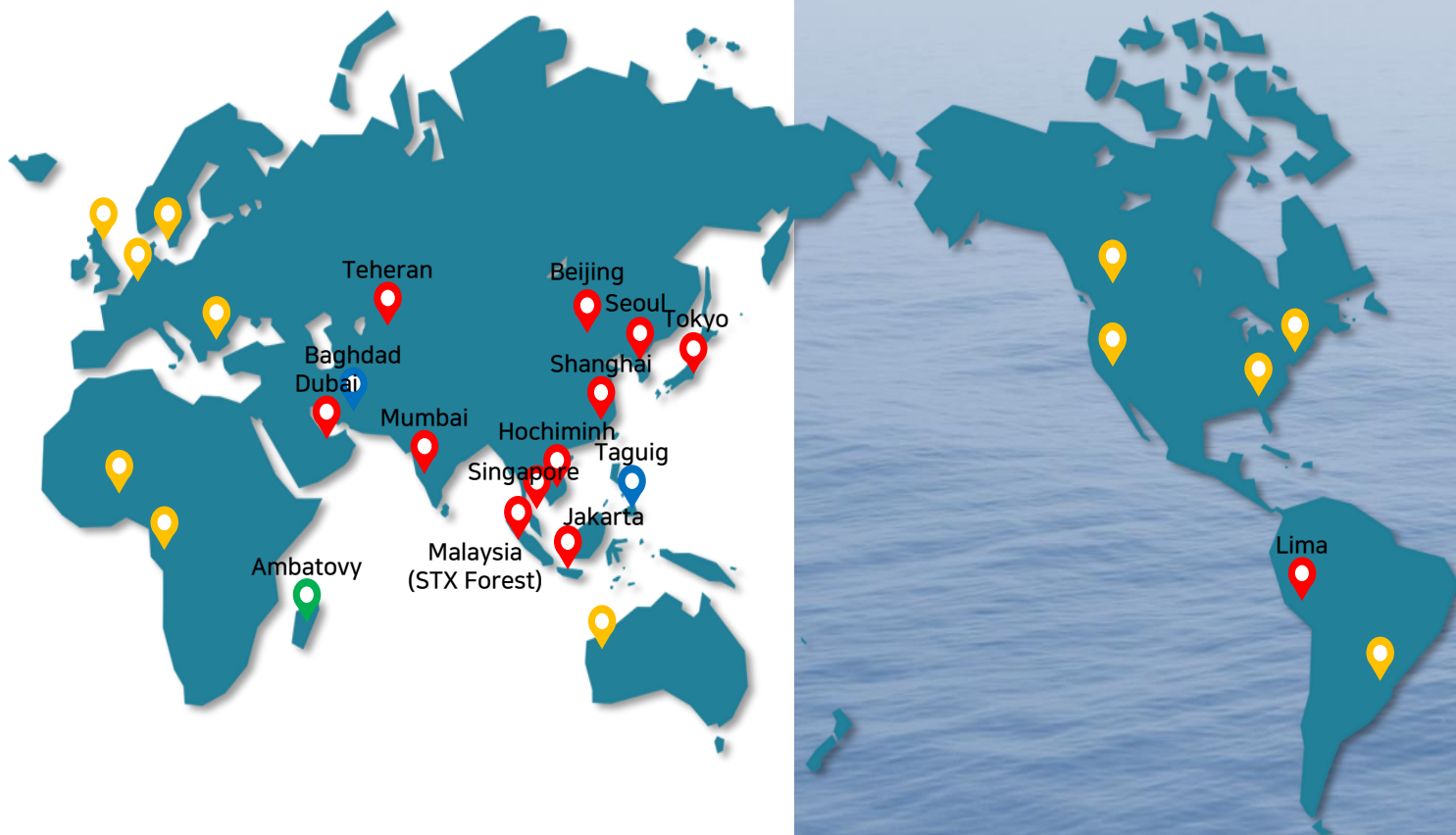




# Network

STX Corporation connects demand and supply chain needed from all over the world with rapid and accurate performance through global partnerships scaled from long-term business effort and direct operation of local corporations and offices in major business countries.

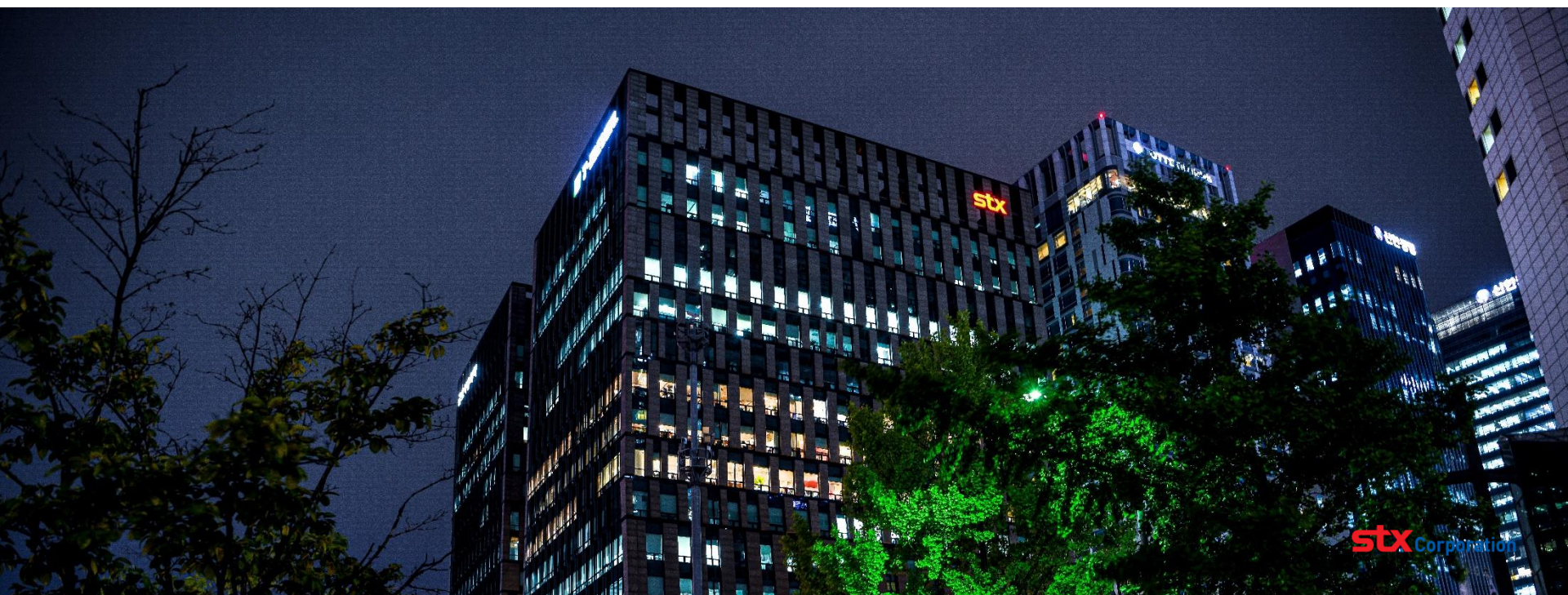
- Overseas Branches and Offices
- Subsidiary Overseas Corporations
- Resource Development Investment
- Business Track Record



# What we do

STX is a global business platform that connects supply and demand around the world through businesses such as secondary battery materials, eco-friendly steel, green energy and bio, and e-mobility based on a wealth of business know-how and a global network.

- TrollyGo
- Secondary Battery Materials
- Green Steel
- Green Energy / Bio
- eMobility
- New growth engines



# Digitized processes

## TrollyGo

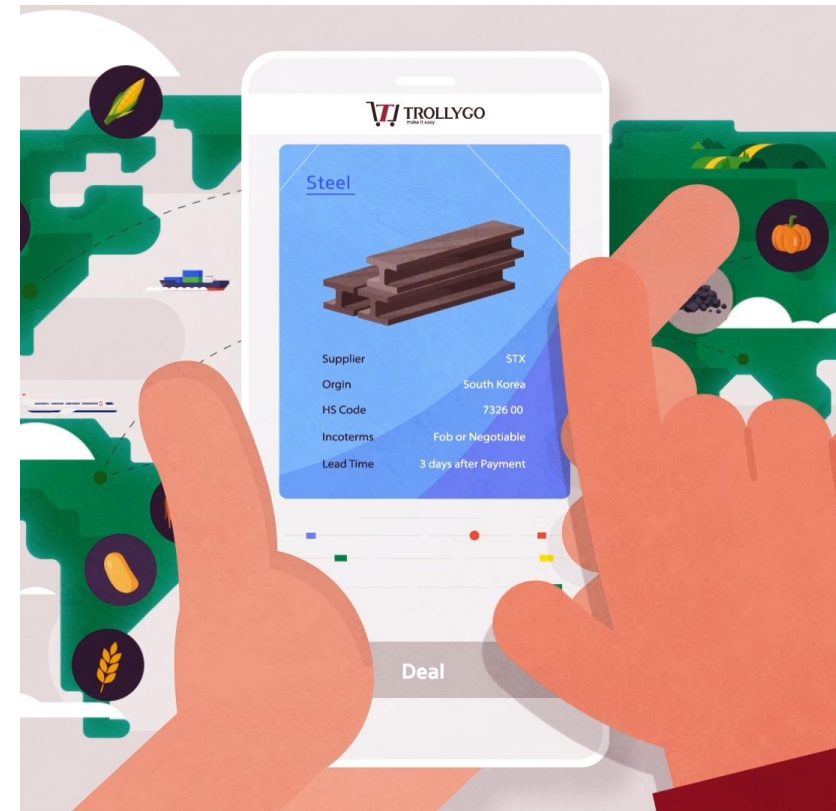
TrollyGo is a global B2B digital platform based on big data and e-commerce, built on STX's global network and know-how accumulated over the past 47 years as a general trading company.

### The world's first B2B digital platform for commodities and industrial goods

As a digital platform connecting global B2B markets, it revolutionizes traditional offline-oriented trade transactions in materials, metals, steel, energy, and defense, providing unlimited business opportunities across borders.

In addition, you can trade not only raw materials and industrial goods across various categories but also intangible items, such as technology and services. You have the opportunity to apply to buy and sell goods from professional traders and can utilize the bidding system to enhance inventory management and sales efficiency.

Also, offering users valuable big data analysis, including product market conditions, forecasts, economic and financial information, and news, enables the resolution of information asymmetry in offline trade transactions. This allows for strategic purchases and sales based on mutual trust.





# Build an Upstream Value Chain

## Secondary Battery Materials

With nearly 50 years of global network and business know-how, we aim to become the world's leading specialist in secondary battery materials. We are strengthening the supply chain and constructing an integrated value chain in the upstream industry, covering mining and refining through to the sales and transportation of secondary battery materials such as nickel, lithium, and graphite.

### 🌿 Nickel

Since 2006, we have built strong partnerships with leading domestic and international companies for nickel trading. Securing stable volumes from the Ambatovy project in Madagascar, one of the world's top three nickel mines, and in Indonesia, home to the world's top reserves, we have established and maintained a strategic supply chain centered on local entities and joint ventures(JVs).

### ⚡ Lithium

The company is accelerating its lithium business by partnering with a leading Chinese producer and securing volumes in South America, where reserves are high. In the future, we are planning to establish a joint venture in South Korea to sell lithium hydroxide in the country.

### ⬛ Graphite

Graphite, a key material that determines the charge rate and lifespan of electric vehicle batteries, is being traded steadily. We have an off-take on 40% of the graphite produced at our Kaula mine in Mozambique. With a purity of over 94%, the graphite from the Kaula mine is among the highest quality in the world. It is used in various smart devices, aviation, insulation products, and serves as a raw material for secondary battery cathodes.

### ||| Aluminum

We are expanding our aluminum business, which is emerging as an alternative to lithium in secondary batteries. Through our global network and expertise, we plan to diversify our business portfolio in the secondary battery sector by supplying not only battery anode and cathode materials but also alternative materials.



# Preemptively addressing demand for Green steel materials

## Green Steel

STX is strengthening its market position by proactively meeting the demand for steel materials in eco-friendly sectors such as solar and wind power generation, as well as electric vehicles. By leading the import and export of major steel and non-ferrous metals at home and abroad, and trilateral trading, we are recognized for our expertise in supply and sales.

### ❖ Stainless Steel

It is an industrial product used in various fields such as automobiles, construction, home appliances, and pipes, and we handle products from Korea, China, Indonesia, and other countries. Among them, Indonesian products are handled by the largest volume among domestic general merchants through a partnership with Chungsan Steel, the world's largest stainless steel company.

### 🔗 Hot Rolled-Cold Rolled

We trade hot-rolled steel, used for industrial pipes and gas cylinders, and cold-rolled steel, employed in ships, plants, automobiles, architectural interiors, and home appliances. Additionally, we handle plated and colored steel using our global network. We are continuously securing and supplying high-value steel materials to strengthen our global value chain.

### 🔲 Iron Scrap

Iron scrap is a raw material used for steel production along with iron ore and raw coal. We are building a trilateral business distribution network by utilizing overseas subsidiaries and offices in 20 countries around the world, in addition to importing and supplying to the domestic industry. We are striving to establish a virtuous cycle of the steel industry ecosystem utilizing iron scrap as well as global trading.





# Expanding into the Eco-friendly field

## Green Energy / Bio

In line with ESG management and decarbonization trends that have become global standards, we are expanding our eco-friendly bio-based raw materials, wood pellets, and fuel businesses. We will lead the global competition with various eco-friendly items for future energy sources and next-generation growth engines.

### ✱ Biomass·Wood

We are focused on producing high-quality lumber and wood pellets, and have acquired a wood pellet mill in Malaysia to stabilize our sourcing base. In addition, we are currently building a wood pellet plant in Korea to diversify its biomass raw material business and engage in trilateral trade.

### 💧 Bioethanol

We are expanding our business in bioethanol, one of the leading renewable energies that can be used to replace gasoline as a fuel for automobiles. By entering the tapioca business, which is a raw material for bioethanol, we aim to become an eco-friendly integrated company.

### ⬛ Oil·Coal(Coke)

We trade base oils and fuel oils, as well as general purpose petrochemicals such as monomers and polymers. We conduct business in markets as diverse as Europe, Southeast Asia, South America, and Africa, depending on the item. We also trade coal as a major supplier to domestic power producers and bilateral companies, seamlessly sourcing volumes from Russia, Australia, Indonesia, Vietnam, Colombia, and other countries.

### 🛢️ Gas(LNG, etc.)

We procure volumes based on off-take through our network of liquefied natural gas (LNG) operators and global trading companies in major countries such as Russia, Africa, the Middle East, and Southeast Asia. As a hub for resource procurement, our gas terminal in Kraskino, Russia, serves as the center of global supply, including exports to China.





# Expanding Defense·Electric vehicle lineups eMobility

We are involved in the global brokerage trade and import-export business of various defense-related products, encompassing passenger and commercial vehicles, specialty vehicles, ships, and military vehicles. We are working to expand our lineup of electric vehicles, leading the next generation of mobility. By providing e-mobility solutions and expanding the distribution of eco-friendly electric bicycles, we are gaining market leadership.

## Traps·Defense

In cooperation with overseas corporations and offices operating in more than 20 countries around the world, we are engaged in land, sea, and air defense trading business in South America, the Middle East, and Africa. We are diversifying our lineup and portfolio in cooperation with leading domestic and foreign defense companies, and expanding our presence with K-Defense's flagship products such as armored vehicles.

The company is leveraging partnerships with domestic shipbuilders to export small and medium-sized ships and specialty vessels to Latin American countries such as Peru. We are also expanding in Southeast Asia, the Middle East, Africa, and the CIS countries. In Peru, in particular, we have consolidated our position with a steady stream of orders for patrol boats.

## Passenger·commercial·specially equipped vehicles

We have established supply chains around the world, including the Middle East, Africa, Latin America, and Southeast Asia, in collaboration with major domestic automakers and specialty vehicle manufacturers. We also supply heavy construction equipment, including excavators and forklifts, to our partners and development sites in each country.

## Electric vehicles and motorized bicycles

With the adoption of global greenhouse gas reduction and fuel economy regulations, we are actively expanding into eco-friendly e-mobility. We are increasing our competitiveness in the global market with eco-friendly mobility products such as domestically produced electric vehicles and electric bicycles, and plan to provide e-mobility solutions for future transportation systems by expanding the related lineup.



# Sustainable Growth Future Business

## New growth engines

STX is an eco-friendly business positioned to become a new growth engine, practicing win-win management and striving for sustainable growth. As one of our growth engines, we aim to contribute to the creation of a healthy industrial ecosystem and virtuous cycle by discovering eco-friendly resources and strengthening the value chain.

### Hydrogen Power

Hydrogen, which is produced through water splitting with a low carbon footprint, is an essential resource for renewable, green energy. We aim to become a global player by enhancing our expertise across the entire supply chain, encompassing the production, storage, and transportation of hydrogen. We also seek to maximize synergies with our subsidiaries, such as PK Valve, which specializes in producing and selling valves for liquefied hydrogen.

### Artificial Intelligence(AI) Smart Grid

Building electricity and gas delivery systems based on state-of-the-art technology can increase energy efficiency and reduce carbon emissions. In particular, South Korea is looking to reduce its dependence on foreign energy resources and promote renewable energy by leveraging its expertise in digital, big data, and interactive communication. We will actively foster the next generation of power infrastructure to prepare for the climate and energy crisis.

### Recycling

Recycling refers to the creation of new value by reclaiming and securing resources while practicing green business. We practice eco-friendly management by recycling nickel, lithium, and other materials from waste batteries of electric vehicles. Simultaneously, we strive to secure mineral resources.

### Healthcare

The global need for healthy living is driving the rise of the healthcare market. Through the trading of healthcare and various health-related products, including medical devices, we aim to address the common needs of humanity in the era of longevity.





# Affiliates

Introducing the affiliates of STX Corporation, which are offering new value to domestic and foreign customers by creating synergy during the corporation which are focusing on various high-value industry fields, including ship and plant O&M, aviation MRO, bio and IT.

- STX Green Logis
- STX Marine Service
- PK valve & Engineering
- STX Resort
- STX Aero Service
- STX Network Service





### Global shipping and logistics company

STX Green Logis, spun off from STX in September 2023, is a global shipping company providing customized global logistics service and specialized maritime transportation service while operating our own fleet safely and efficiently.

STX Green Logis provides customers with safe and efficient global logistics services, along with specialized maritime transportation services in the changing global market based on major businesses such as Maritime Transportation, Shipping Project and aims to create social value.

Company	STX Green Logis
CEO	Woo-Hyung Lee
Address	Jungangdae-ro 102, Jung-gu, Busan-si, Korea
Phone No	+82-2-316-9900
Website	<a href="https://www.stxgreenlogis.co.kr/">https://www.stxgreenlogis.co.kr/</a>

### | Main Business

#### Maritime Transportation

Provides world-wide transportation services for various cargoes such as coal, iron ore, LOG, fertilizer, grain and more.

We offer safe and efficient maritime transpiration services while managing risk with specialized knowledge of cargo handling, ship operation and management.

- Consider cargo characteristics and volumes, route-specific features, and market conditions
- Leverage our global network of shipping lines, bunkers, and agents for competitive pricing
- Safe transportation and claims handling to proactively address cargo and route-specific risks

#### Shipping Project

Provides comprehensive consulting services and partnership for ship investment through various business models involving ship project financing related with shipbuilding, purchasing second-hand vessels and cargo transportation project including both customized ship management services and operating vessels commercially.

1. Project for shipbuilding and purchasing second-hand vessels
  - Ship financing consulting related with shipbuilding, purchasing second-hand vessels in conjunction with financial institutions
  - Technical consulting for shipbuilding such as construction specifications review, shipyard selection, and on-site supervision
  - Eco-friendly ship project in line with maritime decarbonization.
2. Brokering the purchase or sale of second-hand vessels
3. Customized ship management service
  - Traditional ship management service (crew + ship management)
  - Customized ship management service (crew + ship management + insurance, accident handling, commercial operation of vessels)

## Global Service Innovator Specialized in Ship Management & Plant Maintenance

STX Marine Service provides the best professional service in a variety of business areas, including ship management, power plant operation and maintenance, power sales business, and ship equipment trading, based on high-quality technology and practical know-how accumulated over 50 years.

By providing differentiated service based on world-class technology, ability to carry out projects, and well-organized overseas networks, STX Marine Service continues to grow as a trusted enterprise as a partner to customers and business partners.

In addition, STX Marine Service continues to strengthen up-to-date professional skills and becomes a 'Global Service Innovator' in order to provide the highest service with the aim of satisfying every single customer.

Company	STX Marine Service
CEO	Myung-Jae Oh
Address	Jungangdae-ro 102, Jung-gu, Busan-si, Korea
Phone No	+82-51-461-2000
Website	www.stxmarineservice.com

## | Main Business : Ship Management

### Ship Management Service

STX Marine Service provides comprehensive service across the ship value chain from ship and crew management to insurance and accident management, operation and ship owner agency duties, as well as ship owner's agency duties, such as flag management, and ship's sale and closure. Based on more than 50 years of experience, we have established our own manual for all areas of skilled land and sea professional technical personnel and ship management service, and has the largest number of ship management system certifications among domestic ship management companies, securing an unrivaled position in the maritime business area. Based on this expertise, we offer integrated solutions ranging from bulkers, tankers, containers and PCTC ships to special ships and installations such as icebreakers and heavy cargo carriers. Since 2006, we have provided the best service to integrate and link ships, companies, customers, and vendors through our own Web-based comprehensive information system and ship-owner portal sites. We also provide energy-saving solution service (ISEMS) to enhance customer benefits and introduce eco-friendly technologies such as greenhouse gas monitoring to differentiate our service.

### Shipping Project

STX Marine Service has selected TONNAGE PROVIDER business as a new business since 2017 based on our ability to cover all value chains of shipping, including ship sales, ship financing, charter contracts, ship operation, and ship insurance. In 2018, we promoted a project in which we purchased a CAPE BULKER used ship from a large European shipping company and re-chartering it. In addition, we have developed various models of TONNAGE PROVIDER business for domestic and foreign financial customers who own or invest ships and are striving to expand our business. Plus, we are additionally promoting the development and support of the new ship management business and the business related to the technology project related to the ship.

### Supply of Equipment and Materials

STX Marine Service provides integrated supply of equipment related to ships such as engines, parts, consumables, and tools. In order to provide more competitive delivery and price to customers, we have subsidiaries in Europe, the United States, and Singapore and strive to improve service quality and efficiency by introducing our own global logistics system and expanding our network.



## Global Service Innovator Specialized in Ship Management & Plant Maintenance

STX Marine Service provides the best professional service in a variety of business areas, including ship management, power plant operation and maintenance, power sales business, and ship equipment trading, based on high-quality technology and practical know-how accumulated over 50 years.

By providing differentiated service based on world-class technology, ability to carry out projects, and well-organized overseas networks, STX Marine Service continues to grow as a trusted enterprise as a partner to customers and business partners.

In addition, STX Marine Service continues to strengthen up-to-date professional skills and becomes a 'Global Service Innovator' in order to provide the highest service with the aim of satisfying every single customer.

Company	STX Marine Service
CEO	Myung-Jae Oh
Address	Jungangdae-ro 102, Jung-gu, Busan-si, Korea
Phone No	+82-51-461-2000
Website	<a href="http://www.stxmarineservice.com">www.stxmarineservice.com</a>

## | Main Business : Plant

### Plant Operation Service

Based on the technical skills and experience of successfully carrying out 900MW Diesel Power Plant O&M in Iraq and 650MW Thermal Power Plant O&M in the Philippines, STX Marine Service provides integrated Service that oversee power operation, maintenance, restoration, parts supply and technical support for various types of power plants such as diesel, gas turbine, combined thermal power, and renewable energy. Through this, we are taking the lead in improving the power quality of the country by expanding the power capacity and introducing state-of-the-art technology in aging power plants. All power operation projects, including O&M, are high value-added projects that are expected to continue to grow, and based on long-term experience and know-how, we have differentiated competitiveness by establishing manuals and processes for the entire process of business, including 'contract-financial procurement-purchase-logistics-operation-risk management'. STX Marine Service is seeking to continue expanding our market in the Middle East, Africa and Southeast Asia, including Iraq, where we are currently operating.

### IPP Business Development

IPP, a private power generation project, is a private-led power generation project that builds power plants with private capital and collects investment through a certain amount of operation.

It is known as a high-profitable business, and the introduction of the electricity business is becoming more active due to the privatization of the electricity business. In emerging economies, demand for household and industrial energy is rapidly increasing due to population growth, manufacturing expansion, and economic development, and new and renewable energy such as solar, wind power, geothermal, biomass, and waste are required due to increased eco-friendly demand for power plants. Reducing emissions, installing post-processing facilities, and increasing fuel efficiency will be essential for future IPP. Through accumulated experience and technical know-how, STX Marine Service can manage IPP business development as a whole from an operational perspective.



## Korea's Oldest and Largest Industrial Valve Manufacturer

Established in 1946, PK Valve became the first company housed in the Changwon National Industrial Complex in 1974. Since its inception, it has strived to grow into Korea's number one industrial valve manufacturer handling every relevant process, from product development, design and modeling to testing, casting, machining, assembly, inspection, painting and packaging, on its own with an integrated production system.

Company	PK valve & Engineering
CEO	Yeong-Chan Jeon
Address	Gongdan-no 80, Seongsangu, Changwon-si, Gyengsangnam-do, Korea
Phone No	+82-55-268-3777
Website	<a href="http://www.pkvalve.co.kr/kor/main.do">http://www.pkvalve.co.kr/kor/main.do</a>

## | Main Business

### Valve Making business

Leading the industry building on quality control and production systems in compliance with global standards, the company aims for customized manufacturing and tailored services while running systematic production programs to meet the demands of each client as well as industrial standards and regulations.

PK Valve has developed valve products for nuclear power generation, cryogenic high temperature and pressure through 70 years of continuous R&D efforts, aggressive investment and top-notch quality management. The products have found their way into not only the domestic market but more than 70 countries around the world. They are currently in use in various industrial settings such as petrochemical plants and oil refineries, nuclear power stations, gas and LNG facilities, marine, desalination and environmental plants, etc.

### Recreation in Pure Nature and Reliable Food Service

The STX Resort has a management philosophy of improving the quality of customers' life through the provision of high-quality service.

The resort provides various service such as leisure, lodging, banquet, and sports to customers, focusing on the natural environment of Mungyeong City such as MungyeongSaejae and Ssangyong Valley.

Company	STX Resort
CEO	Kwang-Sun Kim
Address	509, Cheonghwa-ro, Nongam-myeon, Mungyeong-si, Gyeongsangbuk-do, Korea
Phone No	+82-54-460-5000
Website	www.stxresort.com

### Resort Business

Located in Mungyeong, which is widely known for beautiful natural environment such as MungyeongSaejae and Ssangyong Valley, STX Resort is a high-quality comprehensive recreation facility that takes into account the harmony between nature and people, from the best bicarbonate hot spring spa facilities in Korea to European-style buildings and landscaping to stone and small props. Geographically located in the middle of the Seoul metropolitan area and the southern part of the country, it has excellent accessibility. It is a resort specialized in corporate education, banquets and group events as well as comfortable rest through hotel-level rooms with two room types and training facilities equipped with various sound and lighting facilities.



## High-End Aviation MRO Service Based on South Korea's First Engineering R&D

STX Aero Service provides above the level of MRO service to both domestic and international airlines based on the geographical advantage of Incheon International Airport, which grew as a global leading airport with the first high-end air MRO service based on R&D in Republic of Korea.

STX Aero Service provides customers safer and economical maintenance/asset management service through 'Total Care Service' including technical management, line maintenance, and parts maintenance service, as well as the landing gear 'overhaul' that mostly relies on foreign technology.

Company	STX Aero Service
CEO	Chan-Geun Song
Address	The Oville #607, ICN International Airport, Incheon, Korea
Phone No	+82-32-710-1156
Website	www.stxaeroservice.com

## | Main Business

### Technology Management Service

The air transport business, which uses aircraft as a means of business, a collection of state-of-the-art technologies, requires highly technology-intensive organizational operations. Also, it is High Risk Business whose operational efficiency depends on the difference in technology determines the success or failure of the business. We focus on providing integrated service ranging from selection of aircraft introduction models to selection and unification of performance and specifications, establishment and optimization of maintenance programs, introduction of purchasing and leasing, negotiation and agency of return and sale transmission so that customers can generate maximum operating profit with minimal operating costs. We also plan to take the lead in advancing South Korea's aviation technology by realizing the localization of maintenance parts through cooperation with manufacturing industries such as machinery, electronics, telecommunications, and chemicals in Republic of Korea, which have grown to a world-class level.

### Landing Device and Parts Service

The Republic of Korea currently has about 700 civil aircraft. 3 to 5 landing gears are installed on each aircraft and are typically inspected and repaired by directly disassembling those every approximately eight years. However, due to the absence of MRO in Republic of Korea, which has the ability to repair landing gear professionally, all aircraft are currently dependent on overseas MROs. The aircraft landing gear carries the greatest load of the aircraft structure and, depending on the turbulence and steering techniques during landing, forces exceeding the permissible limit. Therefore, landing gear overhaul requires highly technical skills and expertise in aircraft repair and modification. STX Aerospace has formed an international network of experts in landing gear to provide total care Service for safe and economical landing gear operations.

Providing comprehensive SI service including IT consulting system deployment, integrated management, and IT outsourcing

With the advent of the "fourth industrial revolution" in which advanced information and communication technologies (ICT) converge across the economy and society to make innovative changes, companies must invent and utilize digital technologies to meet new industrial paradigms and the global IT environment.

In response to the needs of this era, STX Network Service is promoting comprehensive SI projects such as IT consulting and system construction, integrated management, and IT outsourcing to develop the business models that customers need, and plans to provide IT consulting service & integration platforms specialized for shipping and port logistics industries in conjunction with STX Group affiliates.

Company	STX Network Service
CEO	Myung-Gu Lee
Address	Innoflex #705, Gasan digital 1-ro 151, Geumcheon-gu, Seoul, Korea
Phone No	+82-2-583-0072
Website	www.stxnetworksvc.com

## | Main Business

### ICT Service

STX Network Service analyzes, diagnoses, plans, and designs all infrastructure, including hardware, networks and underlying software, which are the basis of customer information technology, to provide optimal infrastructure building service.

### ICT Outsourcing

STX Network Service provides integrated ITIL and ITSM-based maintenance, system/network construction in diverse infrastructure environments, and data and resource-related security operations service.

#### 1) Integrated Maintenance

STX Network Service provides ITIL/ITSM-based operational service through the know-how accumulated from the experience of building various platforms and supporting technologies.

#### 2) System/Network

STX Network Service provides efficient operational service through know-how accumulated from experience in system/network construction and technical support in a variety of infrastructure environments.

#### 3) Security

Since there are always various security risks associated with the outsourcing structure of the client company, security management of all data and resources of the customer is the top priority to avoid serious security incidents.



# Contact

## Headquarters

**STX Corporation**  
Signature Towers, West Wing Floor 13, 100, Cheonggyecheon-ro, Jung-gu, Seoul, 04542, Republic of Korea  
+82-2-316-9600

## Southeast Asia

**STX Corporation  
Hochiminh Office**  
Room 04, Floor 12th, Bitexco Financial Tower, No.2 Hai Trieu Street, Ben Nghe Ward, Dist. 1, HCMC, Vietnam  
+84-28-3827-5885

**STX Corporation  
Jakarta Office**  
Ratu Plaza Office Tower 23rd Floor, Jl. Jend. Sudirman 9, Senayan, Jakarta, 10270, Indonesia  
+62-21-2277-4375

**STX International  
Trading(Singapore) Pte:  
Ltd.**  
3 Anson Road, #14-05 Springleaf Tower, Singapore  
65-6438-9820

**STX Global India Private  
Ltd.**  
A-705, Atrium 215, Andheri Kurla Road, Next to Courtyard Marriott, Hanuman Nagar, Andheri (East), Mumbai - 400 059, India  
91-22-6610-2255 / 66 / 77

## Northeast Asia

**STX(shanghai)  
Corporation Ltd.**  
Room 2002, Zhongrong Hengrui International Plaza(W), No.560, Zhangyang Road, Pudong, Shanghai, China (200122)  
+86-21-6160-4800

**Beijing Branch of  
STX(shanghai)  
Corporation Ltd.**  
Room 608, Tower E ULO Park No.601 Wang Jing Yuan, Chaoyang, Beijing, China (100102)  
+86-10-5369-6179

**STX Japan Corporation**  
7Floor, Ship Toranomon Jitsugyo Kaikan, 1-1-21, Toranomon, Minato-ku, Tokyo, Japan  
+81-3-5510-1323

## Middle East

**STX Middle East FZE**  
P.O. Box : 262099, View # 18-1505, Jebel Ali Free Zone, Dubai, UAE  
+971-4-886-5154

**STX Corporation Tehran  
Office**  
Unit 3, 5th Floor, Artemis Building, Narenjestan 4th St. Pasdaran Ave., Tehran, Iran  
98-21-2625-3481

## South America

**STX Corporation  
Sucursal Del Peru**  
768 Av. Alfredo Benavides, Of. 706, Miraflores, Lima, Peru  
+51-1-445-9111



# End of Document